

Getac

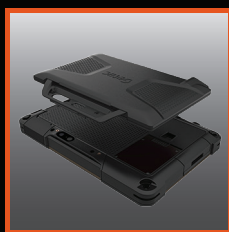
Rugged Mobile Computing Solutions

T800-Ex

Fully Rugged Tablet



- ATEX & IECEx Explosive Atmosphere Certified
- 8.1" HD LumiBond® 2.0 display for better viewing experience
- Getac proprietary SnapBack add-on featuring 2nd expanded battery
- Optional 1D/2D imager barcode reader
- MIL-STD-810G and IP65 certified



SnapBack add-on



T800-Ex Fully Rugged Tablet

Getac recommends Windows.



Specifications

Operating System	Windows 10 Professional
Mobile Computing Platform	Intel® Atom Processor x7-Z8700 1.6 GHz, burst up to 2.40 GHz - 2MB Cache
VGA Controller	Intel® HD Graphics
Display	8.1" TFT LCD HD (1280 x 800) 600 nits LumiBond® display with Getac sunlight readable technology
Storage & Memory	4GB LPDDR3 expandable to 8GB eMMC 64GB / 128GB
Keyboard	6 tablet buttons (Windows, Power, Function Key, Camera Capture/ Barcode Reader Trigger, Volume Up, Volume Down)
Pointing Device	Touchscreen - Capacitive multi-touch screen - Optional dual mode touchscreen (multi-touch and digitizer)
Expansion Slots	Optional 1D/2D imager barcode reader Optional SnapBack add-on: 2nd expanded battery ⁱ
I/O Interface	FHD webcam x 1 8M pixels auto focus rear camera x 1 USB 3.0 (9-pin) x 1 Headphone out/Mic-in Combo x 1 DC in Jack x 1 Micro HDMI x 1
Communication Interface	Intel® Dual Band Wireless-AC 7265, 802.11ac Bluetooth (v4.0) Optional dedicated GPS Optional Gobi™ mobile broadband

Software	Getac Utility (including Power Manager) Getac Geolocation Getac Barcode Manager Adobe® Reader®
Security Features	TPM 2.0
Power	AC adapter (65W, 100-240VAC, 50 / 60Hz) Li-Ion battery (7.4V, 4200mAh) ⁱ LifeSupport™ battery swappable technology (only with SnapBack 2nd expanded battery)
Dimension (W x D x H) & Weight	227 x 151 x 24 mm (8.93" x 5.94" x 0.94") 0.91kg (2 lbs) ⁱⁱ
Rugged Features	MIL-STD-810G certified and IP65 certified 6 feet drop resistant Vibration & drop resistant
Environmental Specifications	Temperature ⁱⁱⁱ : - Operating: -21°C to 50°C / -5.8°F to 122°F - Storage: -40°C to 71°C / -40°F to 160°F Humidity: - 95% RH , non-condensing ATEX / IECEx zone 2/22 II 3G Ex ic IIC T4 Gc II 3D Ex ic IIIB T130°C Dc
Accessories	Main battery (7.4V, 4200mAh) 2nd expanded battery (14.4V, 2100 mAh) AC adapter (65W, 100-240VAC) Capacitive stylus (Hard-tip) Digitizer pen

ⁱ Battery life testing conducted under MobileMark 2007. Battery performance will vary upon software applications, wireless settings, power management settings, LCD brightness, customized modules and environmental conditions. The battery has a limited number of charge cycles and may eventually need to be replaced by a Getac service provider. Battery life and charge cycles vary by use and settings.
ⁱⁱ Weight varies from configurations and optional accessories.
ⁱⁱⁱ Tested by a national independent third party test lab following MIL-STD-810G.

Getac



Getac Technology Corporation
5F, Building A, No. 209, Section 1, Nangang Rd., Nangang Dist.,
Taipei City, 11568, Taiwan, R.O.C.
Tel: +886 2 2785 7888
globalmarketing@getac.com
www.getac.com